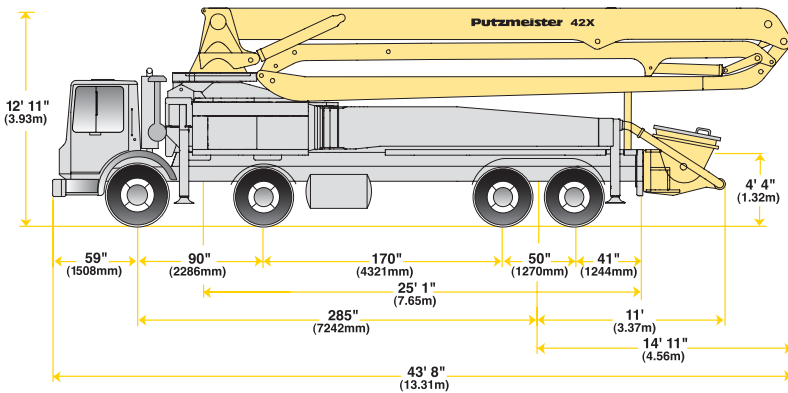


# Specifications

## 42X-Meter Concrete Pump



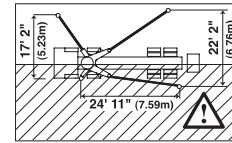
### Truck-Mounted Specifications

Based on Model Mack MR 688S with .16H pump cell.

Length	43' 8"	(13.31m)
Width	8' 2"	(2.50m)
Height	12' 11"	(3.93m)
Wheelbase	285"	(7242mm)
Front axle weight	35,915 lbs	(16,305kg)
Rear axle weight	39,675 lbs	(18,012kg)
Approx total weight	75,590 lbs	(34,318kg)

Weights are approximate and include pump, boom, truck, full hydraulic oil, driver and full fuel. Varies with options selected.

Dimensions will vary with different truck makes, models and specifications.



With One-Sided Support (OSS)

### Boom Specifications • Roll-and-Fold Design

#### Height & Reach

Vertical reach	136' 10"	(41.70m)
Horizontal reach	124' 8"	(38.00m)
Reach from front of truck* (net reach)	115' 9"	(35.30m)
Reach depth	92' 9"	(28.29m)
Unfolding height	32' 6"	(9.90m)

#### 4-Section Boom

1st section articulation	99°
2nd section articulation	180°
3rd section articulation	180°
4th section articulation	255°
1st section length	33' 4" (10.16m)
2nd section length	30' 10" (9.40m)
3rd section length	30' 2" (9.19m)
4th section length	30' 4" (9.25m)

#### General Specs

Pipeline size (ID) metric ends	5"	(125mm)
with couplings	5.5"	(140mm)
Rotation	365°	
End hose-length (heavy-duty)	10'	(3m)
End hose-diameter	5"	(125mm)
Outrigger spread L-R-front telescopic diagonal	26' 1"	(7.95m)
Outrigger spread L-R-rear swing-out	29' 6"	(9.00m)

### Pump Specifications

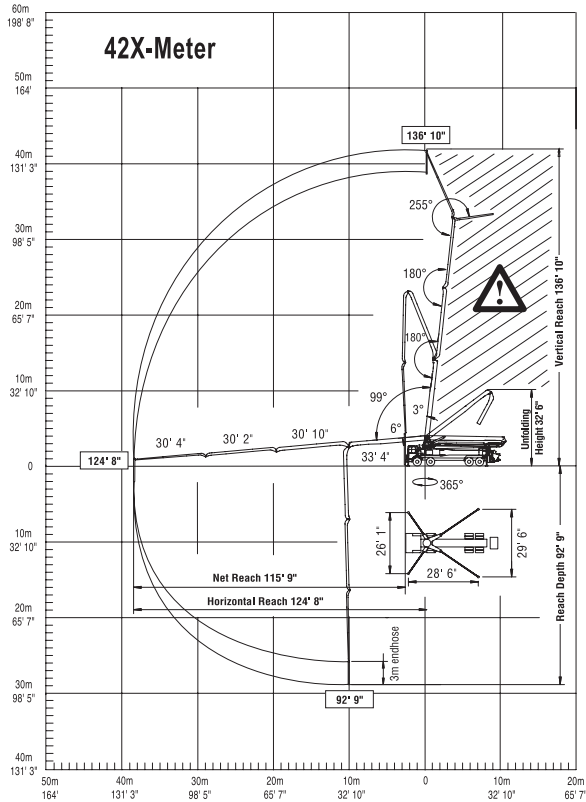
	42X.16H		42X.20H	
Output- rod side	210 yd <sup>3</sup> /hr	(160m <sup>3</sup> /hr)	—	—
piston side	146 yd <sup>3</sup> /hr	(112m <sup>3</sup> /hr)	260 yd <sup>3</sup> /hr	(200m <sup>3</sup> /hr)
Pressure- rod side	1233 psi	(85 bar)	—	—
piston side	1885 psi*	(130 bar)*	1233 psi	(85 bar)
Concrete cylinder diameter	9"	(230mm)	11"	(280mm)
Stroke length	83"	(2100mm)	83"	(2100mm)
Max strokes per minute-				
rod side	31	—	—	—
piston side	21	—	26	—
Volume control	0-Full	—	0-Full	—
Vibrator	Standard	—	Standard	—
Hard chromed concrete cylinders	Standard	—	Standard	—
Hydraulic system	Free Flow	—	Free Flow	—
Hydraulic system pressure	5075 psi	(350 bar)	5075 psi	(350 bar)
Differential cylinder diameter	5.5"	(140mm)	5.5"	(140mm)
Rod diameter	3.1"	(80mm)	3.1"	(80mm)
Maximum size aggregate	2.5"	(63mm)	2.5"	(63mm)
Water tank - pedestal	40 gal	(150L)	40 gal	(150L)
- outrigger	145 gal	(550L)	145 gal	(550L)

Maximum theoretical values listed.

\* Applies to units mounted on PMA stock truck-Mack MR 688S

• Standard delivery line system rated at max line pressure of 1233 psi (85 bar)

Right to make technical amendments reserved.



End hose not to be operated in caution area.



**Putzmeister America**  
1733 90th Street  
Sturtevant  
Wisconsin 53177 USA

Telephone (262) 886-3200  
(800) 884-7210  
Facsimile (262) 884-6338  
www.putzmeister.com